

INSTRUCTIONS: POPAB1 Floor Display

Includes:

- A. Spinning Tower (1)
- B. Spindles (4)
- C. Square Acrylic Inserts (20)
- D. Rectangle Acrylic Inserts (64)
- E. Topper (1)

Notes:

- Two person assembly



26"W x 72"H



Spinning Tower



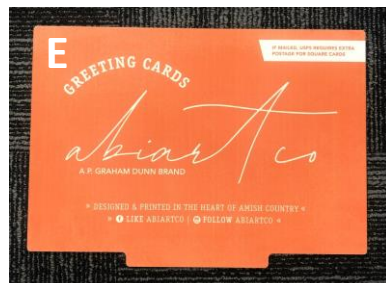
Spindle



Square Acrylic Insert

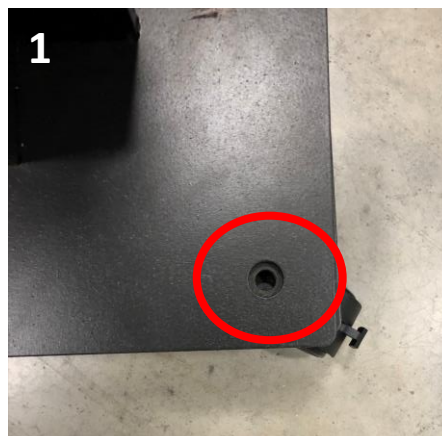


Rectangle Acrylic Insert



Topper

1. Place Spinning Tower (A) upright on floor. Locate the holes in the square base and top.



2. Take one Spindle (B) and insert wooden dowel into top hole first and then insert the metal dowel into the base hole. Repeat for remaining 3 Spindles (B).

Note: May need a second person to hold display still, or utilize locking wheels.



3. Peel off white film from both sides of the Square Acrylic Inserts (C) and Rectangle Acrylic Inserts (D) to reveal clear insert.



4. Place Square Acrylic Inserts (C) into the grooves of the Spinning Tower (A), creating a shelf face.

Note: The Square Acrylic Inserts (C) are not quite square. Rotate 90° if they do not fit correctly.



5. Place Rectangle Acrylic Inserts (D) into the grooves of the Spindles (B), creating a shelf face.

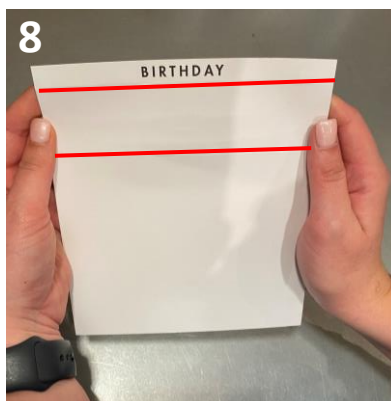


6. Insert Topper (E) into the slit at the top of the Spinning Tower (A).

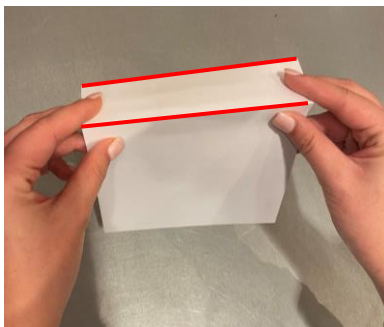
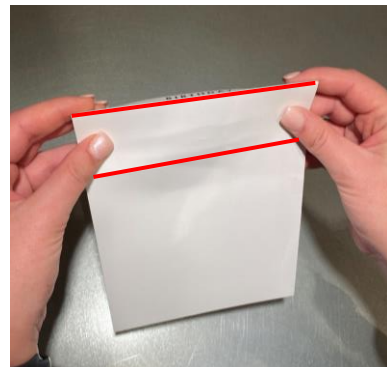
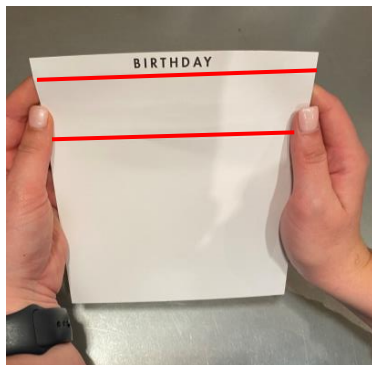


7. Congratulations! Display is ready to load with product.

Note: Use magnetic strip on side of Spindles (B) for magnet display.



Note: To place backer cards, begin by folding along scored lines. Once folded, place on shelf with category name facing forward.



POPPAB1-CDS1

