



# INSTRUCTIONS: POPHK1 Floor Display

## Includes:

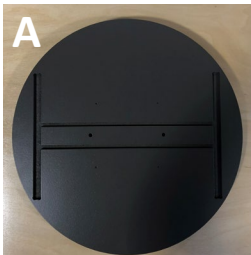
- A. Spinner Base (1)
- B. Center Panel Connector (1)
- C. Reinforcement Panels (3)
- D. Side Panels (2)
- E. Pegboards (2)
- F. Topper (1)
- G. Hooks (40)
- H. Cross Dowels (10)
- I. Bolts (10)
- J. Allen Wrench (1)

## Notes:

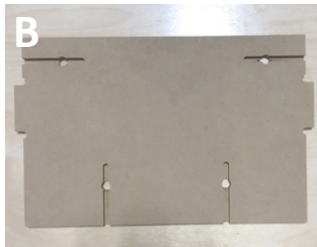
- Two person assembly
- Suggested Tools: Flat Head screwdriver



16"W x 62"H



**Spinner Base**



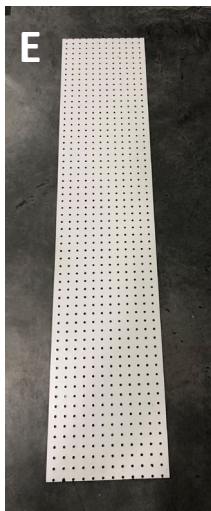
**Center Panel Connector**



**Reinforcement Panel**



**Side Panels**



**Pegboard**



**Topper**



**Hooks**



**Cross Dowels**

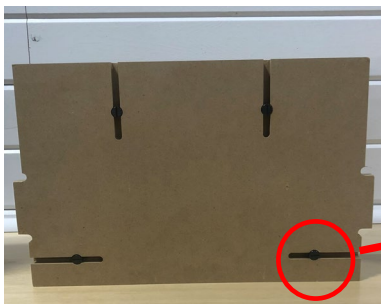


**Bolts**



**Allen Wrench**

1. Stand Center Panel Connector (B) upside down on floor, with slots facing up. Insert Cross Dowels (H) into each circular opening in the Center Panel Connector (B). Assure the slits in the Cross Dowels (H) are parallel with the Center Panel Connector (B) openings, using a Flat Head Screwdriver.



2. Place Side Panel (D) upside down and slide into Center Panel Connector (B) by aligning slot in the Side Panel (D). From the outside, place Bolt (I) in pre-drilled hole, then use Allen Wrench (J) to tighten. Repeat for second Side Panel (D).

**Notes:** If assembled correctly, Bolts (I) will interlock with Cross Dowels (H) for stability. To assemble first Side Panel (D) to the Center Panel Connector (B) may require two people. One to hold Side Panel (D) upright and another to tighten Bolt (I) into place.



3. Insert Cross Dowels (H) into each circular opening in the Reinforcement Panels (C). Assure the slits in the Cross Dowels (H) are parallel with the Center Panel Connector (B) openings, using a Flat Head Screwdriver.



4. Line up Reinforcement Panels (C) with the slots on the inside of each Side Panel (D). From the outside, place Bolts (I) in pre-drilled holes, using the Allen Wrench (J) to tighten. Repeat for second Side Panel (D).

**Notes:** If assembled correctly, Bolts (I) will interlock with Cross Dowels (H) for stability.

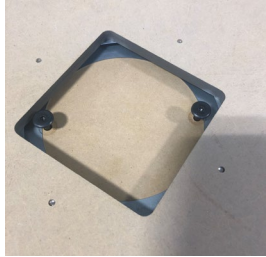


5. Place Spinner Base (A), painted side down, on top of Side Panels (D) by aligning slots.



6. Rotate bottom of Spinner Base (A) until pre-drilled holes are accessible. Place Bolts (I) in pre-drilled holes, then use Allen Wrench (J) to tighten.

**Note:** If assembled correctly, Bolts (I) will interlock with Cross Dowels (H) for stability.

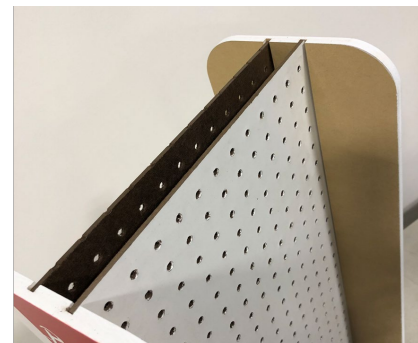
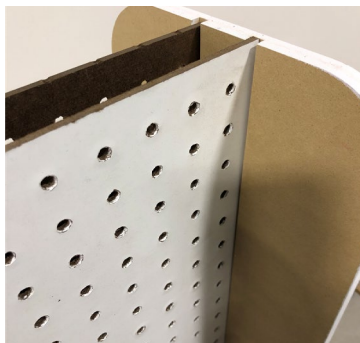


7. Carefully grab the base and sides to flip the display right-side up.

**Note:** Flipping the display may require two people.



8. Slide Pegboard (E) into Spinner Base (A) by aligning with slots on the inside of Side Panels (D). Pegboards (E) should be level with the tops of the Side Panels (D). If they are not level, lightly tap, or wiggle the bottoms of the Pegboard (E) until they slide into place. Repeat for second Pegboard (E).





9. Place Topper (F) on top of Side Panels (D).

**Note:** This should go on easily if lined up properly with Pegboards (E).



10. Insert Hooks (G) into corresponding holes in Pegboards (E).



11. Congratulations! Display is ready to load with product.





POPHK1-COA2



POPHK1-CST2





POPHK1-HPS2

POPHK1-HSA2