



INSTRUCTIONS: POPSF11

Floor Display

Includes:

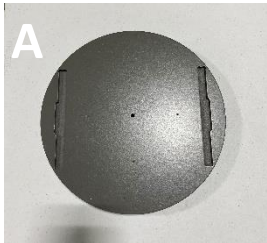
- A. Spinner Base (1)
- B. Center Panel (1)
- C. Cross Dowels (9)
- D. Bolts (9)
- E. Allen Wrench (1)
- F. Side Panels (2)
- G. Shelf (24)

Notes:

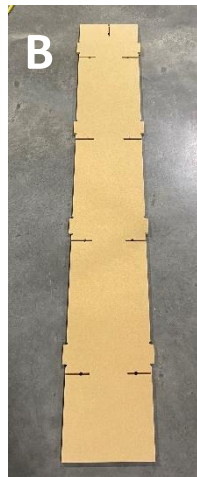
- Two person assembly
- Suggested Tools: Flat Head Screwdriver



12.5"W x 62"H



Spinner Base



Center Panel



Cross Dowels



Bolts



Allen Wrench

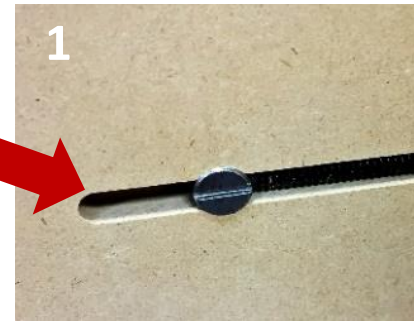
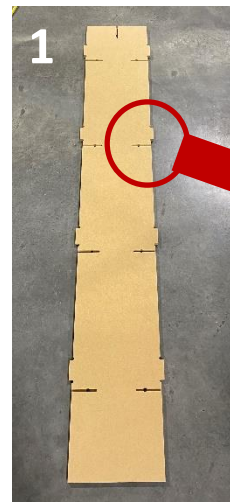


Side Panels



Shelf

1. Stand Center Panel (B) upside down on floor, with slot facing up. Insert Cross Dowels (C) into each circular opening in the Center Panel (B). Assure the slits in the Cross Dowels (C) are parallel with the Center Panel (B) openings, using a Flat Head Screwdriver.



2. Place Side Panel (F) upside down and slide into Center Panel (B) by aligning slots in Side Panel (F) with tabs on Center Panel (B). From the side, place Bolts (D) in pre-drilled holes, then use Allen Wrench (E) to tighten. Repeat for second Side Panel (F).

Note: If assembled correctly, Bolts (D) will interlock with Cross Dowels (C) for stability.



3. Place Spinner Base (A), painted side down, on top of Side Panels (F) by aligning slots.



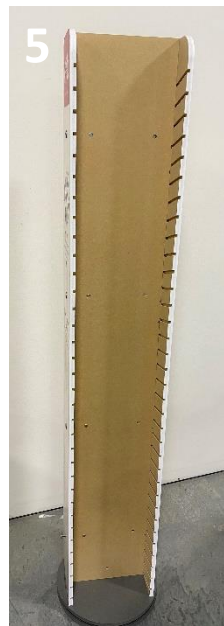
4. Locate pre-drilled hole on bottom of Spinner Base (A). Place Bolt (D) in pre-drilled hole, then use Allen Wrench (E) to tighten.

Note: If assembled correctly, Bolt (D) will interlock with Cross Dowel (C) for stability.



5. Carefully grab the base and sides to flip the display right-side up. Slide Shelves (G) into corresponding slots on the Side Panels (F).

Note: Flipping the display will require two people. Also, when filling the display with Shelves (G), grooves can be positioned facing up or down, depending on product to be displayed. Grooves are designed to assist with the display of round coasters.



6. Congratulations! Display is ready to load with product.



POPSF11-BEB1



POPSF11-COC2



POPSF11-ACR

