



INSTRUCTIONS: POPSF6

Tabletop Shelf Display

Includes:

- A. Spinner Base (1)
- B. Center Panel (1)
- C. Cross Dowels (6)
- D. Bolts (6)
- E. Allen Wrench (1)
- F. Side Panels (2)
- G. Shelf (12)
- H. Topper (1)
- I. Backplate (12)



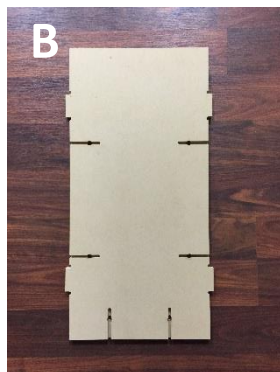
16"W x 26.5"H

Notes:

- Two person assembly
- Suggested Tools: Flat Head screwdriver



Spinner Base



Center Panel



Cross Dowels



Bolts



Allen Wrench



Side Panels



Shelf

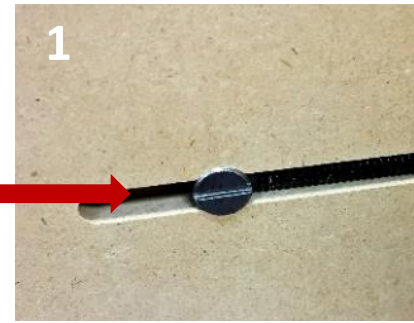


Topper



Backplate

1. Stand Center Panel (B) upside down on floor, with slots facing up. Insert Cross Dowels (C) into each circular opening in the Center Panel (B). Assure the slits in the Cross Dowels (C) are parallel with the Center Panel (B) openings, using a Flat Head Screwdriver.

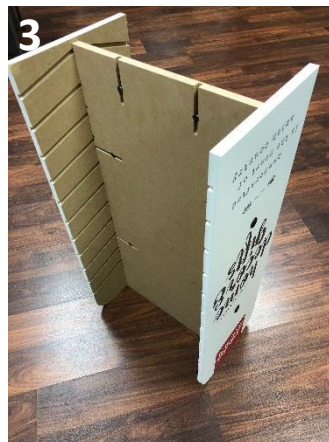


2. Place Side Panel (F) upside down and slide into Center Panel (B) by aligning slots in Side Panel (F) with tabs on Center Panel (B). From the side, place Bolts (D) in pre-drilled holes, then use Allen Wrench (E) to tighten. Repeat for second Side Panel (F).

Note: If assembled correctly, Bolts (D) will interlock with Cross Dowels (C) for stability.

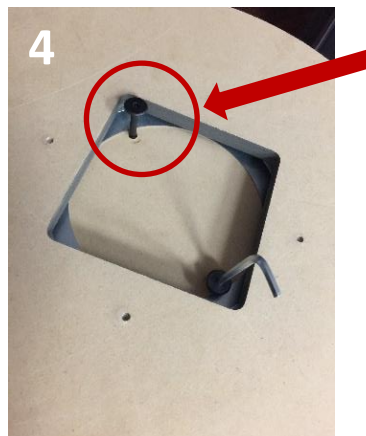


3. Place Spinner Base (A), painted side down, on top of Side Panels (F) by aligning slots.



4. Rotate bottom of Spinner Base (A) until pre-drilled holes are accessible. Place Bolts (D) in pre-drilled holes, then use Allen Wrench (E) to tighten.

Note: If assembled correctly, Bolts (D) will interlock with Cross Dowels (C) for stability.



5. Carefully grab the base and sides to flip the display right-side up. Slide Shelves (G) into corresponding slots on the Side Panels (F).

Note: Flipping the display may require two people.



6. Place the Topper (I) on top of display by aligning slots with Center Panel (B) and Side Panels (F).

Note: This should go on easily if lined up properly.



7. Place Backplate (I) at the back of each Shelf (G) to display product at an angle.



8. Congratulations! Display is ready to load with product.



Framed Décor



POPSF6-LFR2

Canvas



POPSF6-CVS1

Keepsake Cards



POPSF6CD-FDC1

Keepsake Cards



POPSF6CD-FDC2

Word Blocks



POPSF6-BHB2

Word Blocks



POPSF6-BLS1

Word Blocks



POPSF6-SBB6

Word Bubbles



POPSF6-BUB1

When angels were made but our hearts were not

You see you once His angels to hold but I don't know ever you will give up

Awake & pray you're blessed day

Grandmother you an angel

Live by faith

MAY Angels guide you home

Pashley DUNN

home decor gifts

100% CRAFTED IN THE USA

MADE IN THE USA

A wooden rotating display rack filled with 24 round ceramic coasters. The coasters are arranged in four rows of six. The designs on the coasters include: Row 1: 'Best Grandma Ever', 'SUPER DAD', 'Mom Life', 'chaos coordinator', 'Coffee is my best friend', 'I love this'. Row 2: 'American Flag', 'BETTER STRONGER', 'COFFEE is my best friend', 'I love this', 'Prayer is my superpower', 'Love is a four-legged word'. Row 3: 'WASHING MACHINE', 'Scatter Ancestress', 'Faster GUARDIAN ANGEL fly', 'I live in a dream', 'Hugs & Kisses', 'Honey'. Row 4: 'I love my camper', 'Today I am a coffee addict', 'I am a happy camper', 'I love this life', 'I love this life', 'I love this life'. The rack is labeled 'Playful Home' and 'Home Decor Gifts' on the right side.

this is Us
 our story
 our Home

this is my
 HAPPY place

Coffee friends
 make the
 Perfect blend

into good
 things
 are people
 who...

IN A WORLD
 WHERE YOU
 CAN BE
 ANYTHING
 be Kind

CRAZY
 about
 cats

Home
 SWEET HOME

Teacher
 I'm a ROCK
 and a HARD
 place to be heart

you need to be
 heart
 PAWPRINTS

Red Hot
 DUNN

Home
 decor gifts

Handmade with
 love in the USA

POPSF6-COA6

Photo Frames



POPSF6-PHS1

Tabletop Decor



POPSF6-HFA1

Notebooks



POPSF6-NOT2

Notebooks



POPSF6-NOT3