



INSTRUCTIONS: POPSF7

Counter Shelf Display

Includes:

- A. Spinner Base (1)
- B. Center Panel (1)
- C. Cross Dowels (3)
- D. Bolts (3)
- E. Allen Wrench (1)
- F. Side Panels (2)
- G. Shelf (8)

Notes:

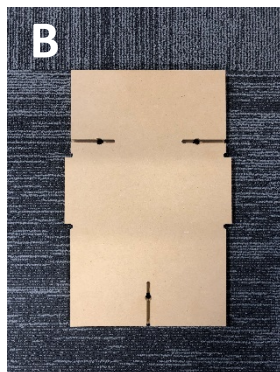
- Two person assembly
- Suggested Tools: Flat Head screwdriver



12.5"W x 16.75"H



Spinner Base



Center Panel



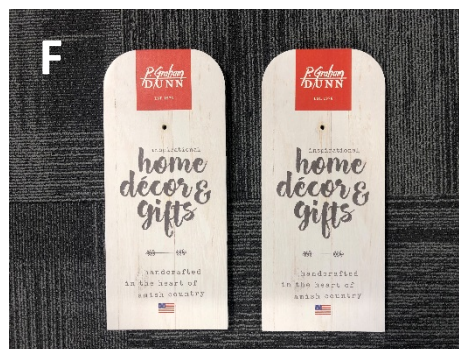
Cross Dowels



Bolts



Allen Wrench

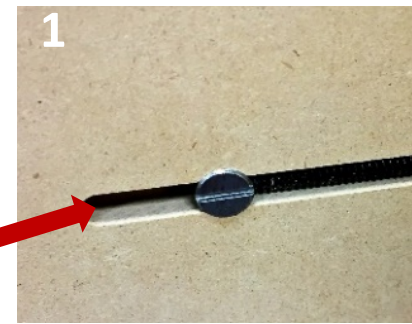
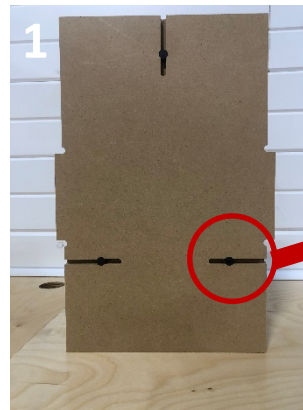


Side Panels



Shelf

1. Stand Center Panel (B) upside down on floor, with slot facing up. Insert Cross Dowels (C) into each circular opening in the Center Panel (B). Assure the slits in the Cross Dowels (C) are parallel with the Center Panel (B) openings, using a Flat Head Screwdriver.



2. Place Side Panel (F) upside down and slide into Center Panel (B) by aligning slot in Side Panel (F) with tab on Center Panel (B). From the side, place Bolt (D) in pre-drilled hole, then use Allen Wrench (E) to tighten. Repeat for second Side Panel (F).

Note: If assembled correctly, Bolts (D) will interlock with Cross Dowels (C) for stability.

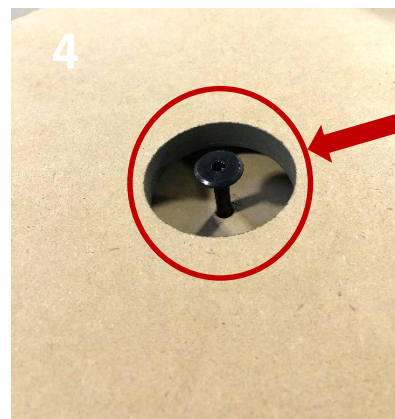


3. Place Spinner Base (A), painted side down, on top of Side Panels (F) by aligning slots.



4. Place Bolt (D) in pre-drilled hole in center of base, then use Allen Wrench (E) to tighten.

Note: If assembled correctly, Bolt (D) will interlock with Cross Dowel (C) for stability.



5. Carefully grab the base and sides to flip the display right-side up. Slide Shelves (G) into corresponding slots on the Side Panels (F).



6. Congratulations! Display is ready to load with product.



Tabletop Décor & Small Gift

POPSF7-ARS1



POPSF7-MGT1

POPSF7-MGT2



POPSF7-MGT3



Coasters & Car Coasters

POPSF7-COA1
POPSF7-COA2
Coast 2 Coast



POPSF7-CST1
Coast 2 Coast



POPSF7-COS1

