



# INSTRUCTIONS: POPSF8

## Floor Shelf Display

### Mini Puzzle Pieces

#### Includes:

- A. Spinner Base (1)
- B. Center Panel (1)
- C. Cross Dowels (10)
- D. Bolts (10)
- E. Allen Wrench (1)
- F. Side Panels (2)
- G. Shelf (14)
- H. Topper (1)

#### Notes:

- Two person assembly
- Suggested Tools: Flat Head screwdriver



16"W x 62"H



**Spinner Base**



**Center Panel**



**Cross Dowels**



**Bolts**



**Allen Wrench**



**Side Panels**



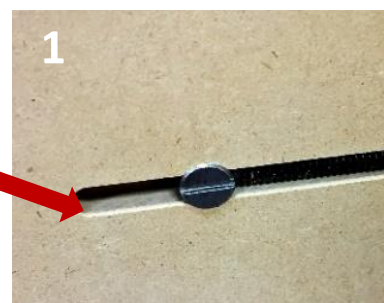
**Shelf**



**Topper**



1. Stand Center Panel (B) upside down on floor, with slots facing up. Insert Cross Dowels (C) into each circular opening in the Center Panel (B). Assure the slits in the Cross Dowels (C) are parallel with the Center Panel (B) openings, using a Flat Head Screwdriver.



2. Place Side Panel (F) upside down and slide into Center Panel (B) by aligning slots in Side Panel (F) with tabs on Center Panel (B). From the side, place Bolts (D) in pre-drilled holes, then use Allen Wrench (E) to tighten. Repeat for second Side Panel (F).

**Note:** If assembled correctly, Bolts (D) will interlock with Cross Dowels (C) for stability.

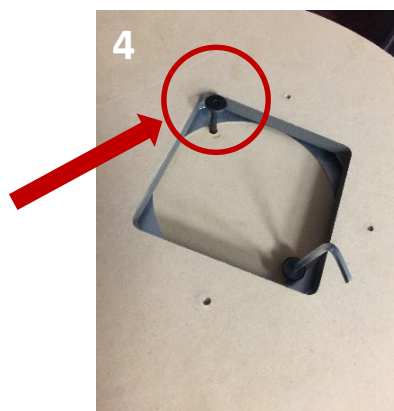


3. Place Spinner Base (A), painted side down, on top of Side Panels (F) by aligning slots.



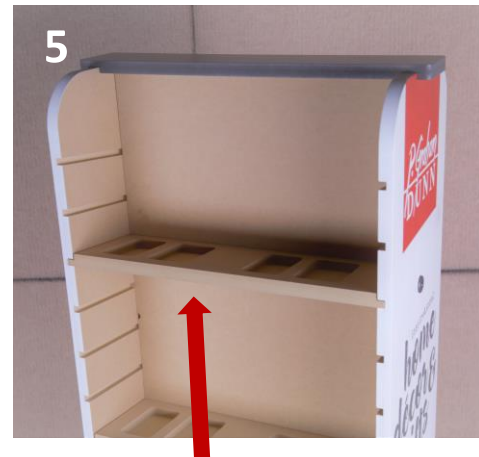
4. Rotate bottom of Spinner Base (A) until pre-drilled holes are accessible. Place Bolts (D) in pre-drilled holes, then use Allen Wrench (E) to tighten.

**Note:** If assembled correctly, Bolts (D) will interlock with Cross Dowels (C) for stability.



5. Carefully grab the base and sides to flip the display right-side up. Slide Shelves (G) into corresponding slots on the Side Panels (F).

**Note:** Flipping the display will require two people.



6. Place the Topper (I) on top of display by aligning slots with Center Panel (B) and Side Panels (F).

**Note:** This should go on easily if lined up properly.



7. Congratulations! Display is ready to load with product.





## Mini Puzzle Pieces

POPSF8-PUZ1



## Mini Puzzle Pieces

POPSF8-PUZ2

