

**P. Graham
DUNN**

EST. 1976

INSTRUCTIONS: POPSS1 Floor Display

Includes:

- A. Base (1)
- B. Tower (1)
- C. Topper (1)
- D. Cross Dowels (4)
- E. Brackets (24)
- F. Shelves (12)
- G. Bolts (4)
- H. Allen Wrench (1)



20.25"W x 20.25"L x 71"H



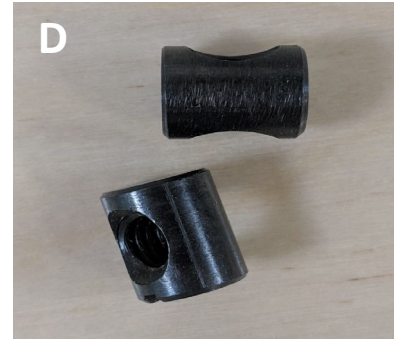
Base



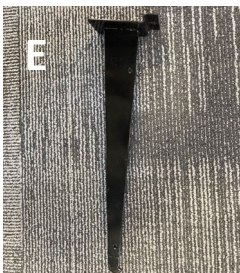
Tower



Topper



Cross Dowels



Shelves



Bolts

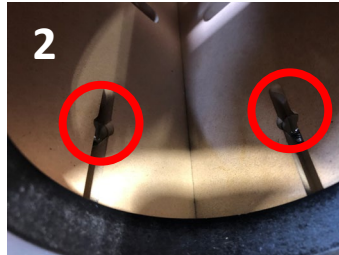


Allen Wrench

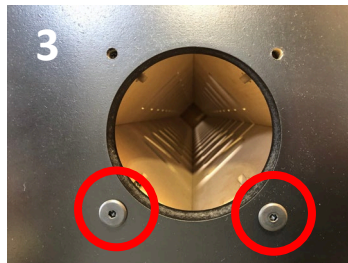
1. Place Tower (B) horizontally on floor. Slide bottom of Tower (B) into the square-carved slot in top of Base (A).



2. With Tower (B) and Base (A) laying down, use the hole at the bottom of Base (A) to insert two Cross Dowels (D) into the circular openings on the inside of Tower (B). Assure the slits in the Cross Dowels (D) are parallel with the Tower (B) openings.

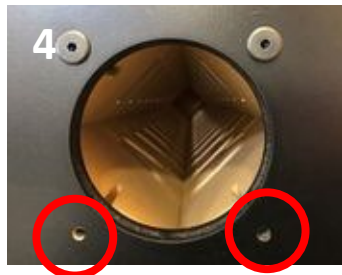


3. Insert Bolts (G) into bottom two holes in Base (A) and tighten using Allen Wrench (H).



Note: If assembled correctly, Bolts (G) will interlock with Cross Dowels (D) for stability.

4. Carefully grab Base (A) and Tower (B) and rotate 180 degrees. Then repeat steps two and three.



5. Now that Base (A) and Tower (B) are affixed, carefully lift Tower (B) and position the display right-side up (on wheels).

Note: Lifting the display may require two people.



6. Insert Brackets (E) on all four sides of Tower (B) to provide support for a complete shelf.

Note: Brackets (E) can be spaced on Tower (B) as desired and will depend on product displayed.



7. Place Shelves (F) atop Brackets (E) and align corner slots with tip of Brackets (E). Once aligned, gently slide Shelf (F) down onto Brackets (E) to lock into place.



8. Insert Topper (C) into the slit at the top of the Tower (B).



9. Congratulations! Display is ready to load with product.



Word Bubbles



POPSS1-BUB1

Shapes



POPSS1-SAT1

Word Blocks



POPSS1-BLC1



POPSS1-BHB1

Photo Frames



POPSS1-PHF1